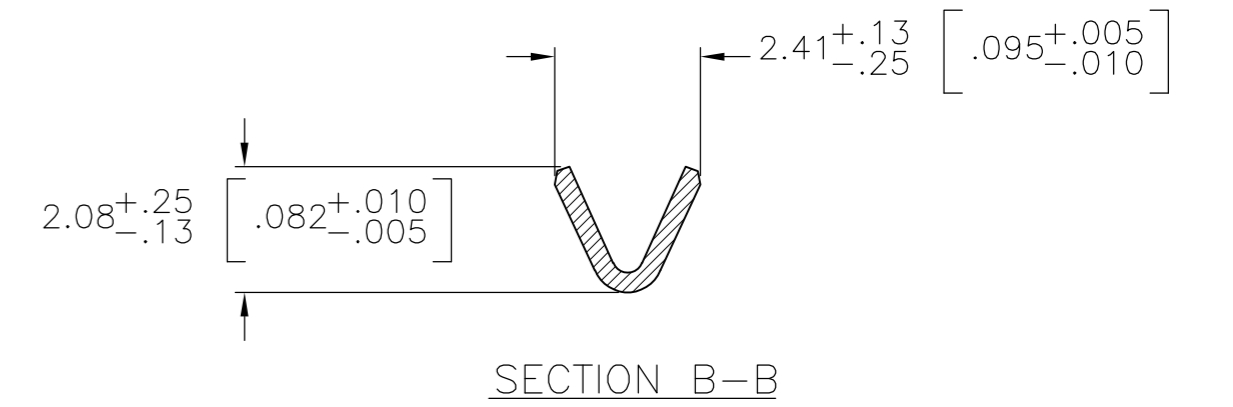
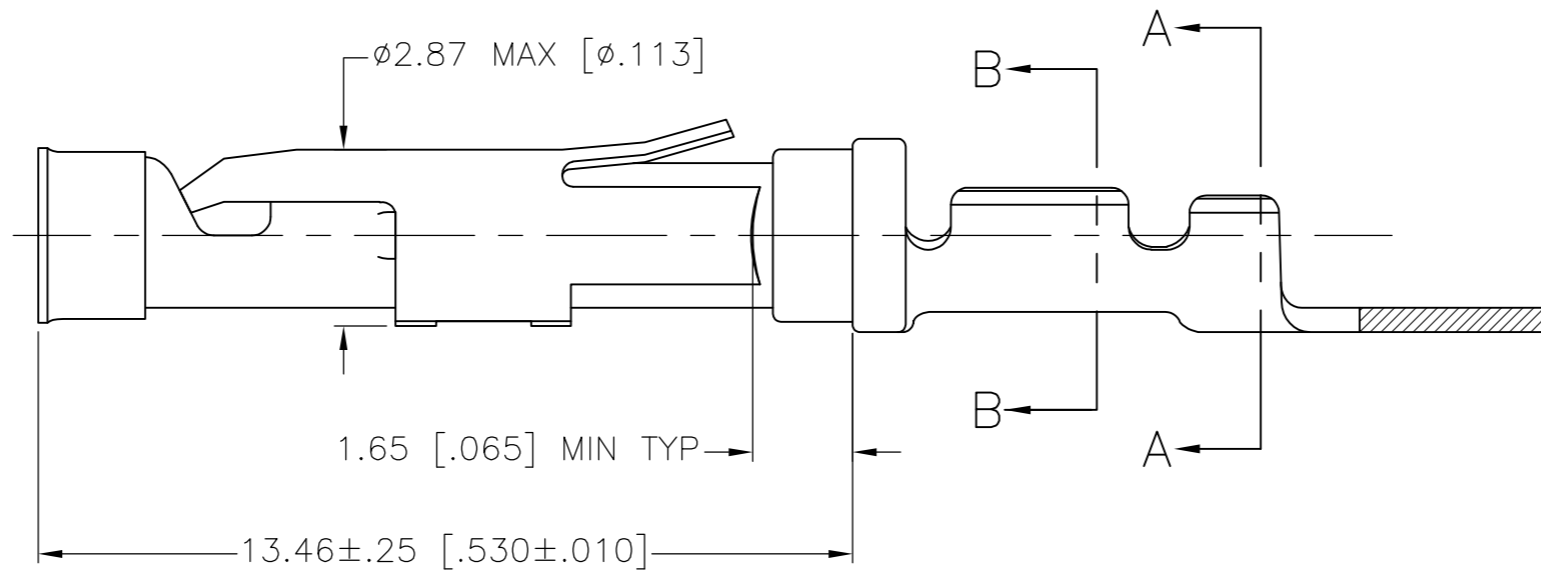
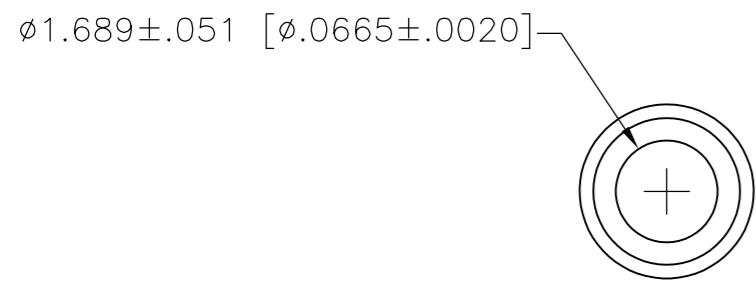
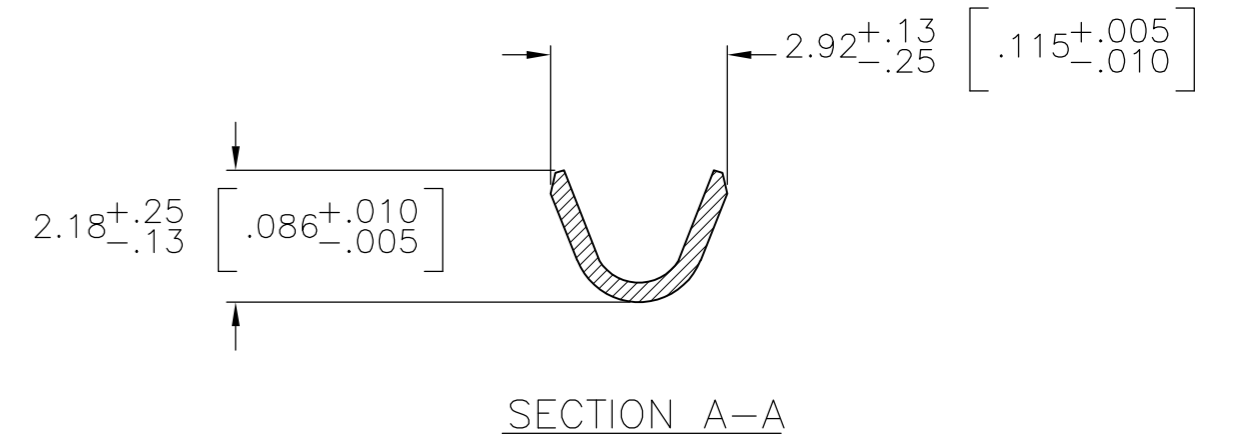
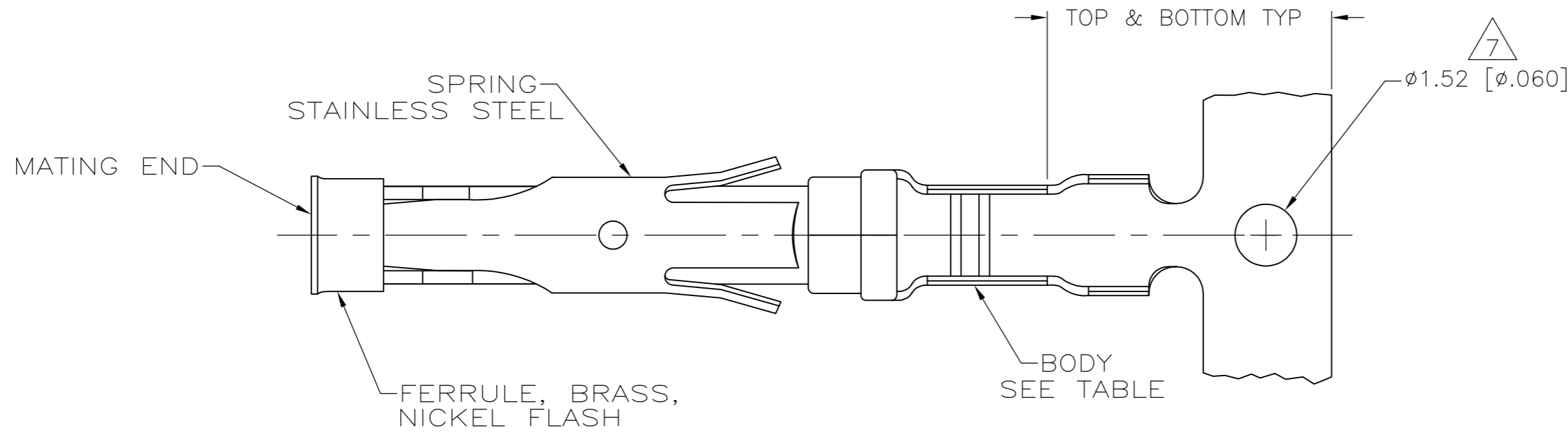


THIS DRAWING IS UNPUBLISHED. RELEASED FOR PUBLICATION  
 © COPYRIGHT - By - ALL RIGHTS RESERVED.

LOC	DIST	REVISIONS					
FT	0	P	LTR	DESCRIPTION	DATE	DWN	APVD
		AZ		REVISED PER ECO-12-012320	04JUL12	KH	MZ



- 1 0.76µm [.000030] MIN GOLD PER MIL-G-45204 ON MATING END FOR A LENGTH OF 5.08 [.200] MIN WITH 1.27µm [.000050] MIN MATTE TIN PLATE IN WIRE CRIMP AREA, BOTH OVER 0.76µm [.000030] MIN NICKEL PER QQ-N-290.
- 2 1.27µm [.000050] MIN TIN-LEAD PER MIL-T-10727 OVER 0.76µm [.000030] MIN NICKEL PER QQ-N-290.
- 3 0.76µm [.000030] MIN GOLD PER MIL-G-45204 ON MATING END FOR A LENGTH OF 5.08 [.200] MIN WITH A UNIFORM GRADIENT TO 0.25 [.000010] MIN GOLD PER MIL-G-45204 ON THE REMAINDER OVER 0.76µm [.000030] NICKEL PER QQ-N-290.
- 4 0.38µm [.000015] MIN GOLD PER MIL-G-45204 ON MATING END FOR A LENGTH OF 5.08 [.200] MIN WITH 1.27µm [.000050] MIN MATTE TIN PLATE IN WIRE CRIMP AREA, BOTH OVER 0.76µm [.000030] MIN NICKEL PER QQ-N-290.
- 5 1.27µm [.000050] MIN GOLD PER MIL-G-45204 ON MATING END FOR A LENGTH OF 5.08 [.200] MIN WITH GOLD FLASH ON REMAINDER OVER 1.90µm [.000075] MIN NICKEL PER QQ-N-290.
- 6 0.15µm [.000020] MIN GOLD PER MIL-G-45204 ON MATING END FOR A LENGTH OF 5.08 [.200] MIN WITH GOLD FLASH ON REMAINDER OVER 1.27µm [.000050] MIN NICKEL PER QQ-N-290.
- 7 GOLD PLATING NEED NOT APPEAR IN THIS AREA EXCEPT 1-66104-6 & 1-66104-7 HAVE GOLD PLATING ON INSULATION BARREL.
- 8 REVERSE REELED FOR MINI-APPLICATOR.
- 9 WIRE RANGE 24-20 AWG. INSULATION RANGE 1.02 [.040]-2.03 [.080].
- 10 0.38µm [.000015] MIN GOLD PER MIL-G-45204 ON MATING END FOR A LENGTH OF 5.08 [.200] MIN, 1.27µm [.000050] MIN TIN-LEAD PER MIL-T-10727 FOR A LENGTH OF 5.69 [.224] MIN ON OPPOSITE END, BOTH OVER 1.27µm [.000050] MIN NICKEL PER QQ-N-290 ON ENTIRE CONTACT.
- 11 0.76µm [.000030] MIN GOLD PER MIL-G-45204 ON MATING END FOR A LENGTH OF 5.08 [.200] MIN WITH GOLD FLASH ON THE REMAINDER OVER 1.27µm [.000050] MIN NICKEL PER QQ-N-290.
- 12 1.27µm [.000050] MIN TIN PER MIL-T-10727 OVER .076µm [.000030] MIN NICKEL PER QQ-N-290.
- 13 0.38µm [.000015] MIN GOLD PER MIL-G-45204 ON MATING END FOR A LENGTH OF 5.08 [.200] MIN, 1.27µm [.000050] MIN TIN PER MIL-T-10727 FOR A LENGTH OF 5.69 [.224] MIN ON OPPOSITE END, BOTH OVER 1.27µm [.000050] MIN NICKEL PER QQ-N-290 ON ENTIRE CONTACT.
- 15 2.54µm [.000100] MIN SILVER OVER 0.76µm [.000030] MIN NICKEL PER QQ-N-290
- 16 OBSOLETE PARTS: OBSOLETE CIS STREAMLINING PER D.RENAUD/D.SINISI
- 17 SUPERCEDED BY 3-66104-2

REV	DESCRIPTION	DATE	BY	CHK	APVD	DESCRIPTION	DATE	BY	CHK	APVD	
8						BRASS	-				3-66104-3
8						BRASS	-				3-66104-2
8						BRASS	-				3-66104-1
8						BRASS	1-66105-9				3-66104-0
STANDARD						BRASS	1-66105-9				2-66104-9
14						BRASS	-				2-66104-7
OBSOLETE						BRASS	1-66105-4	16	17		2-66104-6
						BRASS	-				2-66104-5
OBSOLETE						PHOSPHOR BRONZE	1-66105-3				2-66104-3
OBSOLETE						PHOSPHOR BRONZE	1-66105-2				2-66104-2
OBSOLETE						BRASS	-				1-66104-9
OBSOLETE						BRASS	-				1-66104-7
OBSOLETE						BRASS	1-66105-0				1-66104-6
						BRASS	66105-4				66104-9
						BRASS	66105-3				66104-8
						BRASS	66105-2				66104-7
						BRASS	66105-1				66104-6
STANDARD						BRASS	66105-4				66104-4
STANDARD						BRASS	66105-3				66104-3
STANDARD						BRASS	66105-2				66104-2
STANDARD						BRASS	66105-1				66104-1
REELING						BRASS	66105-4				66104-9
						BRASS	66105-3				66104-8
						BRASS	66105-2				66104-7
						BRASS	66105-1				66104-6
						BRASS	66105-4				66104-4
						BRASS	66105-3				66104-3
						BRASS	66105-2				66104-2
						BRASS	66105-1				66104-1
						BRASS	66105-4				66104-9
						BRASS	66105-3				66104-8
						BRASS	66105-2				66104-7
						BRASS	66105-1				66104-6
						BRASS	66105-4				66104-4
						BRASS	66105-3				66104-3
						BRASS	66105-2				66104-2
						BRASS	66105-1				66104-1
						BRASS	66105-4				66104-9
						BRASS	66105-3				66104-8
						BRASS	66105-2				66104-7
						BRASS	66105-1				66104-6
						BRASS	66105-4				66104-4
						BRASS	66105-3				66104-3
						BRASS	66105-2				66104-2
						BRASS	66105-1				66104-1
						BRASS	66105-4				66104-9
						BRASS	66105-3				66104-8
						BRASS	66105-2				66104-7
						BRASS	66105-1				66104-6
						BRASS	66105-4				66104-4
						BRASS	66105-3				66104-3
						BRASS	66105-2				66104-2
						BRASS	66105-1				66104-1
						BRASS	66105-4				66104-9
						BRASS	66105-3				66104-8
						BRASS	66105-2				66104-7
						BRASS	66105-1				66104-6
						BRASS	66105-4				66104-4
						BRASS	66105-3				66104-3
						BRASS	66105-2				66104-2
						BRASS	66105-1				66104-1
						BRASS	66105-4				66104-9
						BRASS	66105-3				66104-8
						BRASS	66105-2				66104-7
						BRASS	66105-1				66104-6
						BRASS	66105-4				66104-4
						BRASS	66105-3				66104-3
						BRASS	66105-2				66104-2
						BRASS	66105-1				66104-1

THIS DRAWING IS A CONTROLLED DOCUMENT.

DIMENSIONS: mm [INCHES]

TOLERANCES UNLESS OTHERWISE SPECIFIED:

0 PLC	±	-
1 PLC	±	-
2 PLC	±	0.13 [.005]
3 PLC	±	-
4 PLC	±	-
ANGLES	±	-

MATERIAL: SEE CALLOUTS

FINISH: SEE CALLOUTS

WEIGHT: -

CUSTOMER DRAWING

DWN: V. FURLER 22JUL2003

CHK: G. STEINHAUER 22JUL03

APVD: G. STEINHAUER 22JUL03

PRODUCT SPEC

APPLICATION SPEC

TE Connectivity

SOCKET ASSEMBLY, .062 TYPE III+

SIZE: A2 CAGE CODE: 00779 DRAWING NO: 66104 RESTRICTED TO: -

SCALE: 8:1 SHEET: 1 OF 1 REV: AZ